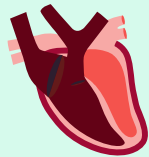


# Student Health Advisory Council

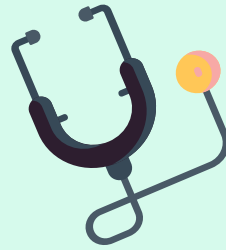
September 16,  
2021



Children must be healthy learn. Child must learn to be healthy.

# Mission

Promote sound school policies and practices that will improve the health and wellness of our students, faculty, and community members.



# Vision



Focus on a future where every child in Frisco ISD has the opportunity to live a healthful lifestyle, to be health and physical educated, and to transfer that knowledge into action.





# Goals



- Support a healthy and safe school environment that fosters learning.
  - Establish healthy behaviors during childhood that carry over for a lifetime.
  - Strengthen academic success by enriching health and physical activity opportunities.
  - Champion the practice Community and School Health by effectively implementing the eight components.
- 
- 

# Membership - FISSD Staff



- Dr. Jodi Davis, Managing Director of Student Services
- James Ayers, Coordinator of LOTE, PE, and Health
- Lisa Jenkins, Director of Child Nutrition
- James Coldwell, Coordinator of Safe Schools
- Heather Mayfield, Coordinator of Secondary Counseling
- Andrea Erwin, Student
- Kathy Tolbert, Director of Nursing Services
- Jodie Lott, Campus Intervention Coach
- Jason Wooden, Coordinator of Student Support
- Melanie Smith, Coordinator of Student Support
- Stephanie Campbell, Manager of Nursing
- Casey Perry, Dietician
- Renell Ford, Dietician

# Members - Non Staff



- Shakesha Spates
- Dr. Yamuna Gurrapu
- Dr. Sara Huevo Funes
- Meredith Hardee
- David McGarry
- Leah Wilson
- Venessa Beckman
- Amy Kreins
- Alpa Sharma
- Lubna Dastagir
- Angela Dunford
- Claudia Montarnari
- Alakananda Jwala
- Vail Tolbert
- Kelly Twedell
- Lily Holmes
- Tye Tran
- Haley Brasher

# Components

- Health Education & Services
- Physical Education and Physical Activity
  - Nutrition Environment & Services
- Counseling, Psychological, & Social Services
  - Social and Emotional Health
    - Physical Environment
    - Employee Wellness
- Family/Community Engagement



A graphic of a stethoscope with a black tubing and a yellow chest piece, positioned on the left side of the page. The background is light teal with dark teal and green abstract shapes.

# Subcommittees

**01**

**Counseling & Psychological  
Services  
Social & Emotional Climate**

**03**

**Health & Physical  
Education, Nutrition,  
Physical Environment**

**02**

**Family Engagement  
& Community  
Involvement**

**04**

**Health and  
Employee Wellness**

# NORMS

- Be respectful and honor everyone's ideas.
- Be open minded and solution driven.
- Keep it positive and share the talk time.





# **Counseling & Psychological Services**

## **Social & Emotional Climate**

### Members

James Caldwell, Chair

Melanie Smith, Co-Chair

Andrea Erwin

Amy Kreins

Vail Tolbert

Meredith Hardee

Kelly Twedell



# Health Services and Employee Wellness

## Members

Kathy Talbert, Chair

Stephanie Campbell, Co-Chair

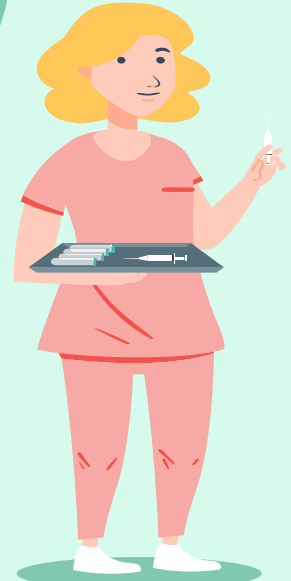
Hailey Brusher

Alpa Sharma

Dr. Sara Huevo Funes

Dr. Yamuna Gurrapu

Shakesha Spates



# Family Engagement and Community Wellness



## Members

Heather Mayfield, Chair  
Jason Wooden, Co-Chair  
Lubna Dastagir  
Leah Wilson  
Casey Perry  
Angela Dunford  
Lily Holmes

# Health Ed, PE, Physical Activity and Nutrition

## Members

Lisa Jenkins, Chair

Jodie Lott, Co-Chair

Renell Ford

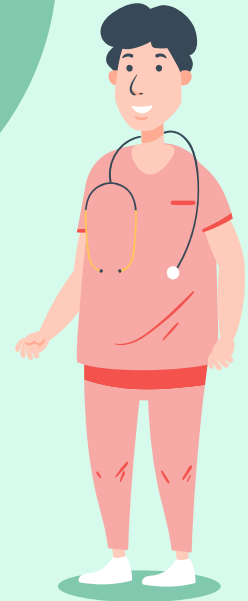
Claudia Montanari

David McGarry

Alka Jwala

Venessa Beckman

Tye Tran



# Adoption of NEW Wellness Guidelines



# Meeting Dates:



November 11, 2021  
February 17, 2022  
April 28, 2022



\*Subcommittees may need meet more frequently between regular meetings.

# Guiding Principles

Texas Education Code 28.004

FISD SHAC By-Laws

FISD Policy LEGAL and LOCAL



# Your work today:

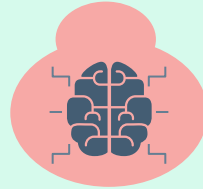


## Getting Started

Exchange contact info

Select a secretary

Chairs discuss work from previous years



## Brainstorming

Make a list of possible project idea

Narrow you list

Select one, if possible



## Next Steps

Where do we go from here?

Google Drive