

FRISCO INDEPENDENT SCHOOL DISTRICT

# COVID-19 UPDATE

Protocols and Case Data



# FRISCO ISD CASE DATA

## PRIOR TO HALLOWEEN

7-Day average daily new cases were stable at about 10 for most of October

## HALLOWEEN SPIKE

In the first 9 days of November, average new cases increased from 10 to 26

## THANKSGIVING SPIKE

From November 27 to December 4, average daily new cases almost doubled from 18 to 34.

## WINTER BREAK SPIKE

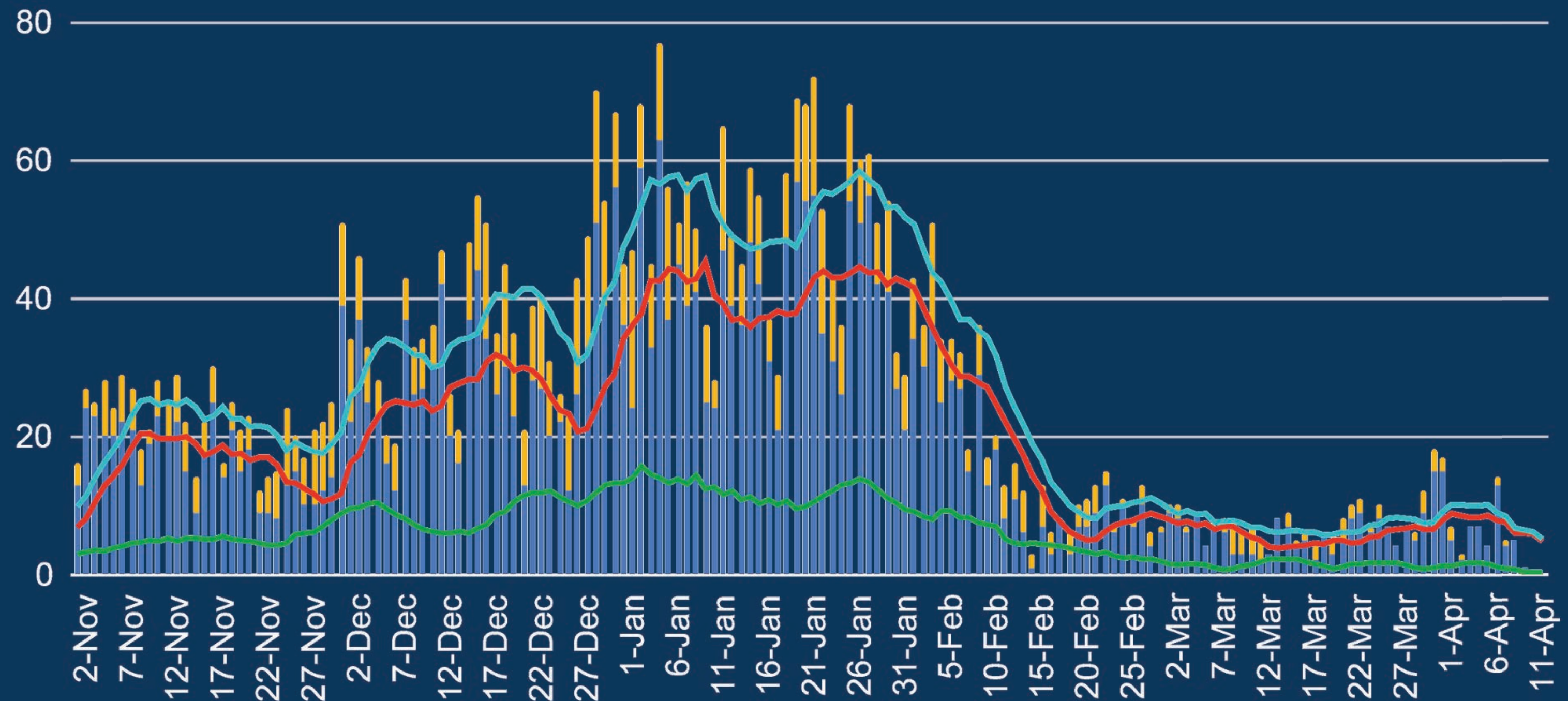
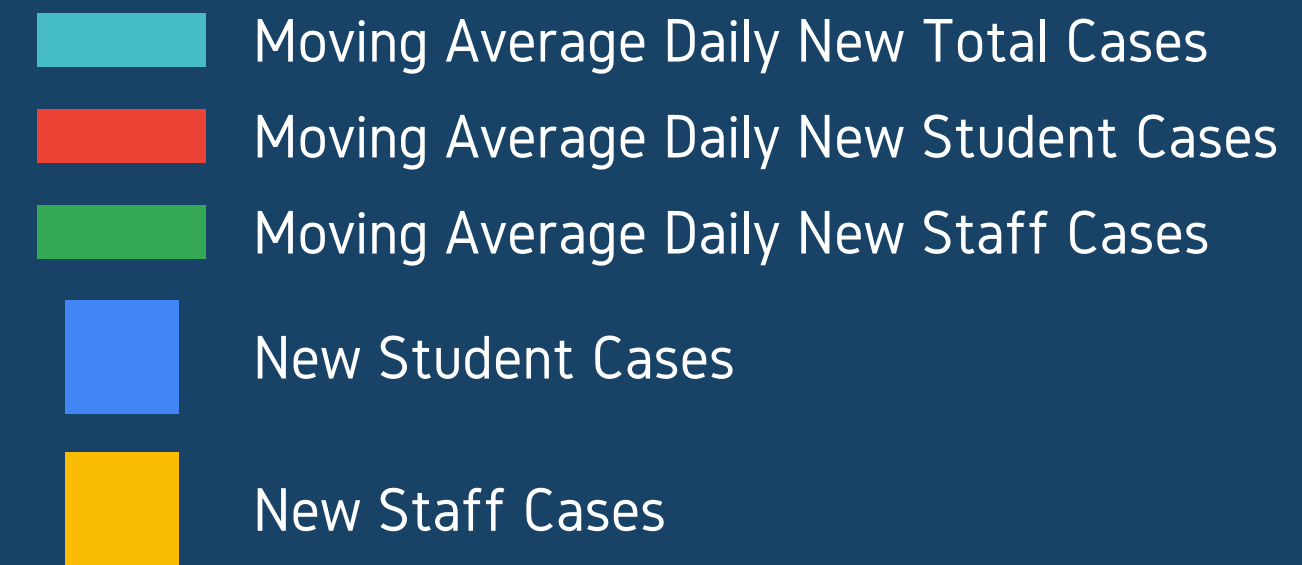
On December 18, average daily new cases were at 41. By the end of break, average daily new cases had reached a new peak of 58.

## STEEP DECLINE

Since peaking at 58 new cases per day on January 26, cases have plummeted hitting a low of 6 on March 12 and stabilizing around 10.



# NEW CASES BY PERSON TYPE





# SPREAD WITHIN CAMPUSES

## EFFECTIVE MITIGATION

9,739 students and staff have completed quarantine for close contact on campus. **1.71%** of those have tested positive with no known external exposure. By contrast, **6.6%** of the population of Frisco ISD students and staff have tested positive and about **6.6%** of the population of Collin and Denton counties have tested positive





# BREAKING DOWN THE SPREAD

## HIGH-CONTACT CATEGORIES

PREK-2ND

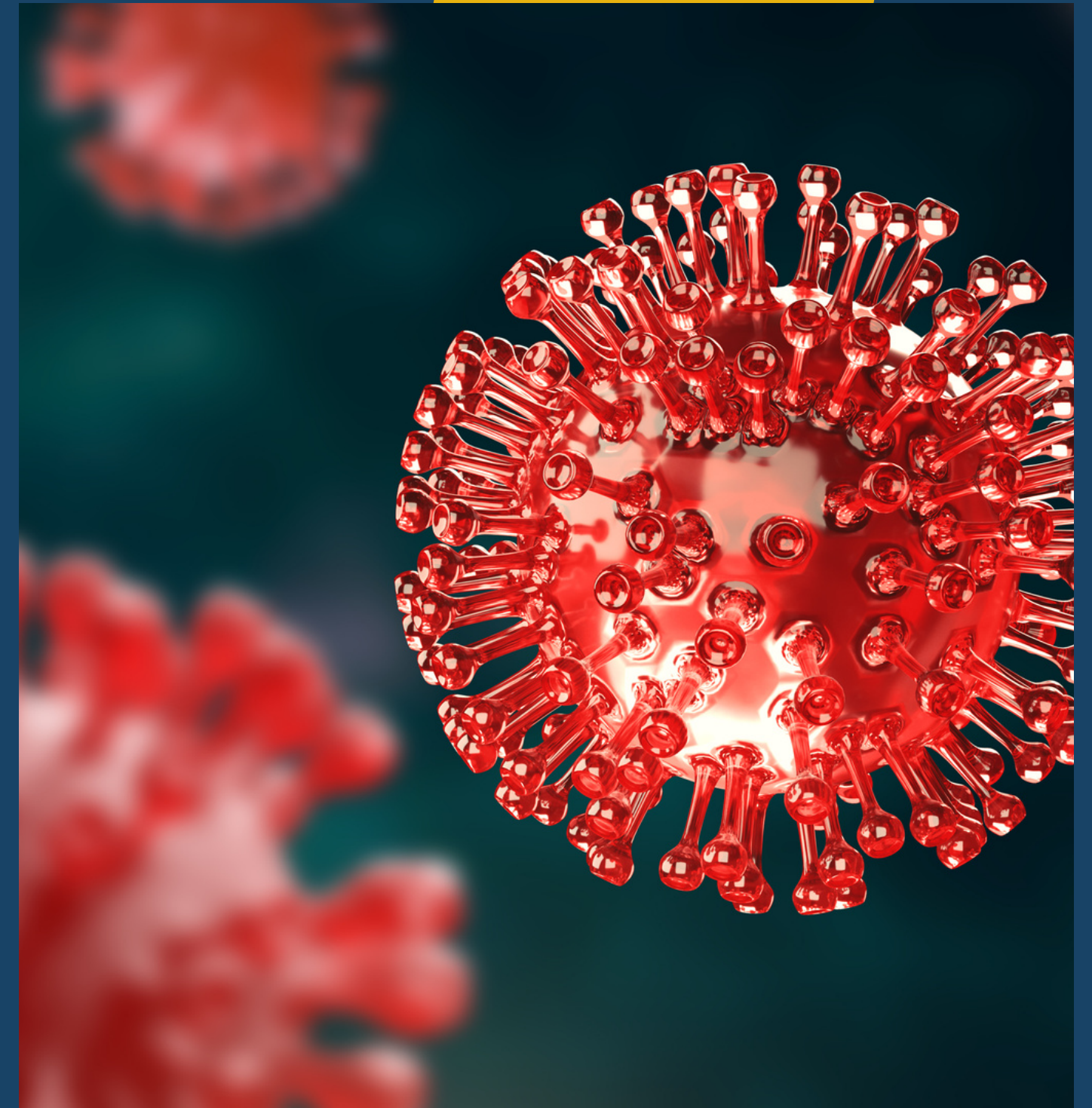
**28%**

BASKETBALL

**13%**

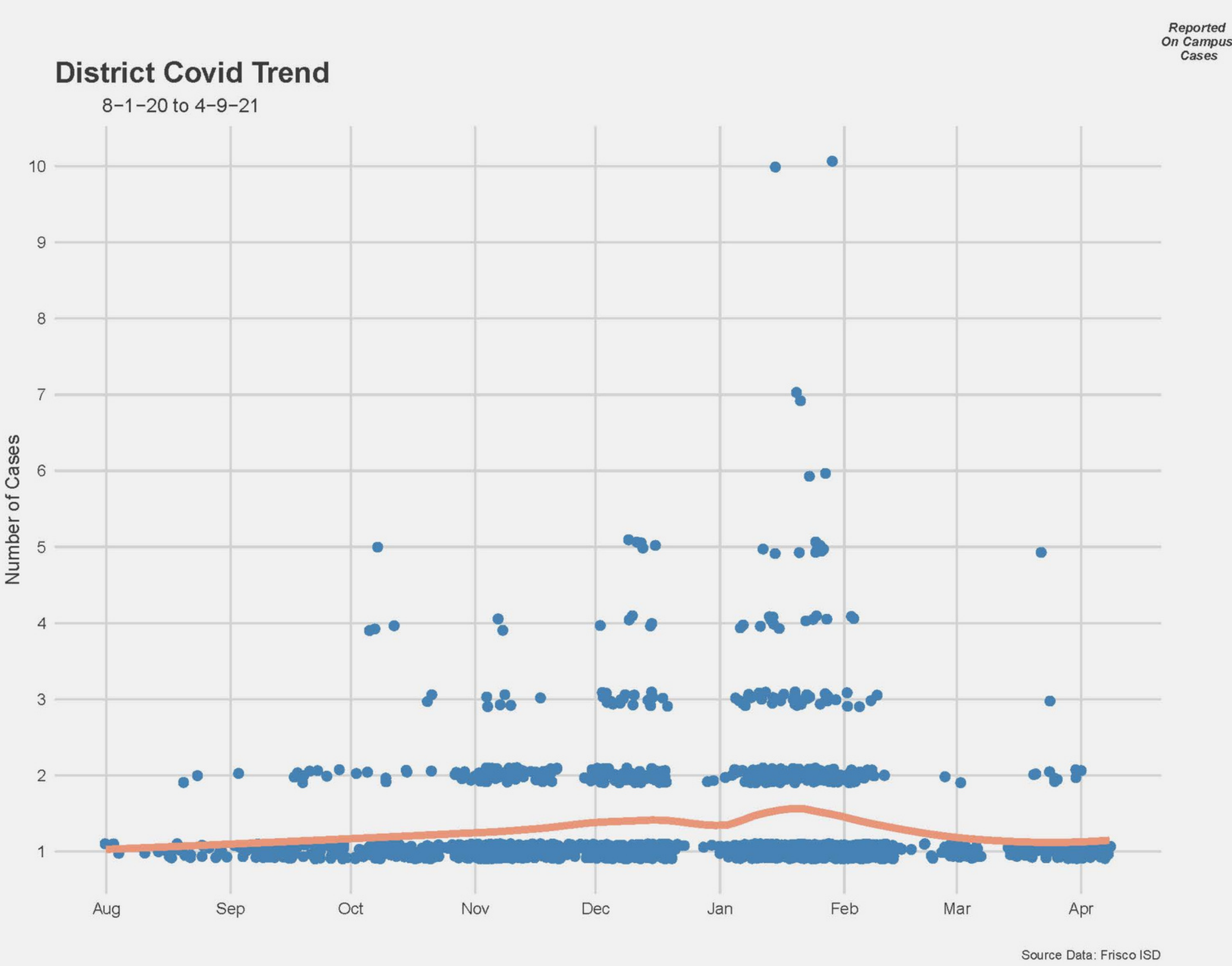
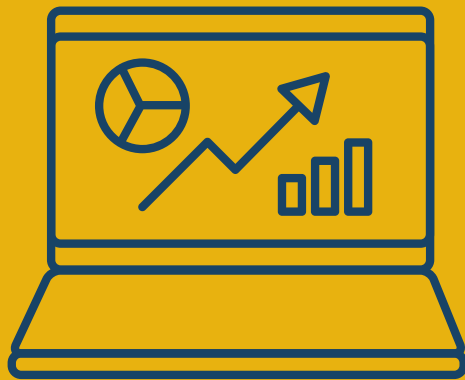
OTHER  
ATHLETICS

**26%**



# AVERAGE CONCENTRATION OF DAILY CASES

The number of cases the average campus in Frisco ISD is expected to report. For April 8: 0.987



# FRISCO ISD DISEASE ACTIVITY LEVEL METRICS

SUMMER 2020

FISD developed disease activity level metrics based on a document prepared by the SC DHEC the SC DOE

AUGUST 2020

The Governor of Texas issued a face covering mandate that applied to schools.

OCTOBER  
2020

FISD rolled out new disease activity level metrics based on FISD data.

JANUARY 2021

FISD revised disease activity level metrics to incorporate certain data points and to provide greater context for the public.

MARCH 2021

Governor Abbott rescinded the face covering requirement, but gave TEA authority to determine any requirements for schools.



## FACE COVERINGS

When Frisco ISD developed its Disease Activity Levels and metrics, they were intended to serve as a way for the District to gauge the need for certain disease mitigation protocols such as face coverings. This was prior to official guidance from the TEA.

Once the TEA published its guidance and the Governor issued the face covering mandate, the Disease Activity Levels became more focused on providing context to the public.

In January, Disease Activity Levels were revised to provide more context, but this resulted in the minimal category allowing for a significantly higher number of cases.

# FACE COVERINGS





# FACE COVERINGS CONT.



## FACE COVERINGS

In all of our conversations with local health authorities, their recommendation has been universal in that we should continue requiring face coverings through the end of the school year.

We have asked for guidance on developing metrics for when face coverings requirements could be removed, but the consistent response has been that we need to get through the end of the school year.

Data trends thus far have shown that the US follows Europe and that the southern US follows the northern portion of the US.

## QUARANTINING

Prior to the District's decision to consider masking when quarantining, the average number of close contacts per case was 8.16. After making the protocol shift, that dropped to 5.32. This may not seem like a huge difference, but given the number of cases, keeping masks in place and considering them when determining close contact has likely resulted in 5,914 quarantines avoided from October through April 4. In other words, because of masks, quarantines have been 38% lower than they otherwise would have been.

# FACE COVERINGS CONT.





# QUARANTINE PERIODS



## UPDATED QUARANTINE PERIOD

In collaboration with our local health authority, effective today, our close contact quarantine period has been adjusted to allow individuals to return to school/work after 7 days if the individual receives a negative test that was administered on day 5 or later.

The background of the image shows several hands raised in the air, suggesting a classroom or a meeting where people are participating or asking questions. The hands are out of focus, and the overall image has a dark blue, semi-transparent overlay.

**QUESTIONS?**