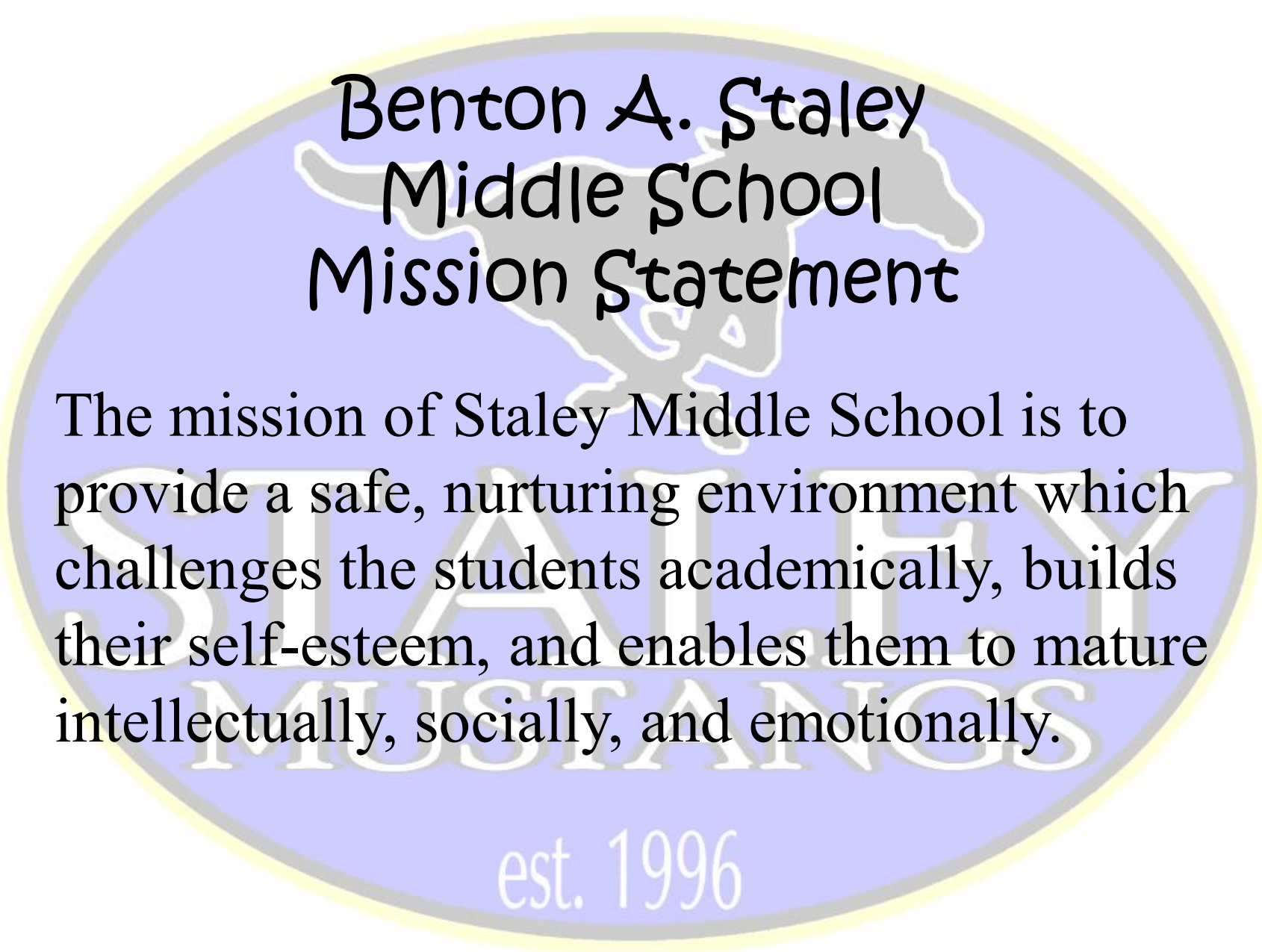


The Exemplary



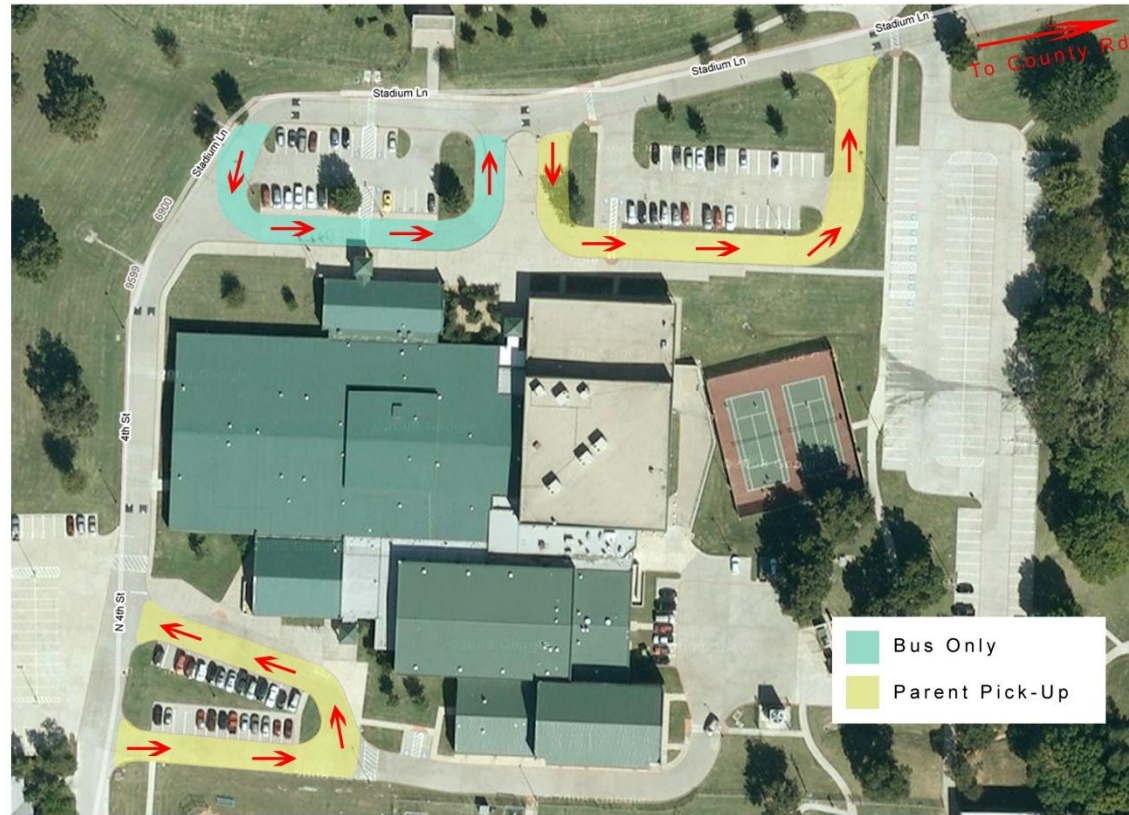


# Benton A. Staley Middle School Mission Statement

The mission of Staley Middle School is to provide a safe, nurturing environment which challenges the students academically, builds their self-esteem, and enables them to mature intellectually, socially, and emotionally.

est. 1996

# Drop off and Pick up



## North Side of Campus:

Northeast Drive Thru: Parent drop off or pick up

Northwest Drive Thru: School bus drop off or pick up only

## South Side of Campus:

Southwest Drive Thru: Parent drop off or pick up only

YMCA, Boys & Girls Club, plus any other after school program pick up

\*\*Students may be dropped off between 7:30 and 8:35 daily. Tutorials begin at 8:10 daily.

# **Tutorials**

**If you need help from your teacher  
we offer tutorials two times a day.**

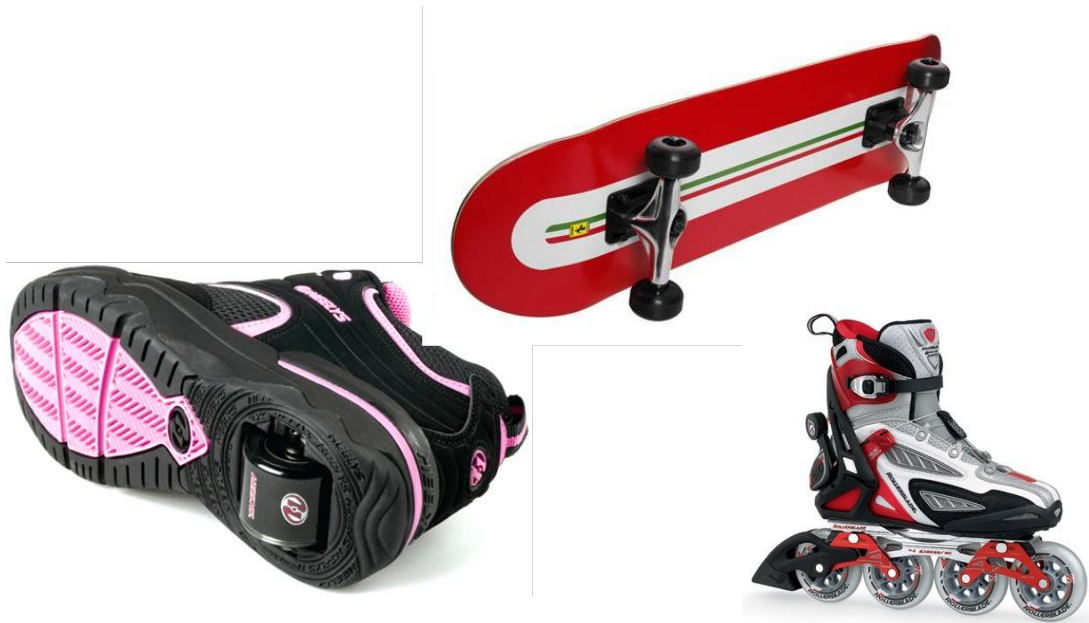
**8:10 - 8:35**

**3:55 - 4:25**



# Now that I'm here, what do I do?

- How do I get my bike on campus?
- Where do 6<sup>th</sup> graders sit in the cafeteria?
- Prohibited items with wheels at school



# Backpacks & Lockers

Students will have a locker assigned to them on their schedule card. If a student's locker is too tall for him/her please see Mr. Helenberger to discuss getting a bottom locker.

Backpacks may be brought to school, but must be left in the locker during the school day.



# A/B Days

Period	Course-Section	Description	Marking Periods	Days	Room	Teacher
1	ELA16100M - 1	Reading 6	M1,M2,M3,M4,M5,M 6	A,B	603	Brazeal, Tina
2	SST16100M - 1	Social Studies 6	M1,M2,M3,M4,M5,M 6	A,B	600	Chianese, D'Ann
3	ELA26200M - 3	PAP English 6	M1,M2,M3,M4,M5,M 6	A,B	605	Boniol, Jennifer
4	TEC16100M - 4	Computer Literacy 6	M1,M2,M3,M4,M5,M 6	A	508B	Cantrell, Jeff
4	HPE16100M - 4	PE 6	M1,M2,M3,M4,M5,M 6	B	Gym	Gribnitz, Janet
5	SCI16100M - 6	Science 6	M1,M2,M3,M4,M5,M 6	A,B	609	Barnes, Meredith
6	ELC15109M - 1	Exploratory Wheel	M1,M2,M3,M4,M5,M 6	A,B	504	McMahon, Christin
7	MTH16100M - 4	Math 6	M1,M2,M3,M4,M5,M 6	A,B	607	Morey, Jon
8	ELC15112M - 2	Advisory 6	M1,M2,M3,M4,M5,M 6	A,B	600	Chianese, D'Ann
9	ADV15100M - 12	Mustang Tribes Advisory	M1,M2,M3,M4,M5,M 6	A,B	504	McMahon, Christin

# PE Uniform



# Dress Code...



# WHEN IS LUNCH????

**Monday, Tuesday, Thursday, Friday**

**12:51 - 1:21**

**Wednesday**

**12:32 - 1:02**

- <http://www.friscocafe.org/>





# The Nutrition 411

Get connected to good Nutrition.

- > Home
- Nutrition
- General Info
- Free/Reduced
- About Us

### Links

#### QUICK LINKS

- ▶ Allergy Info
- ▶ Nutrition Links
- ▶ Staff Contacts
- ▶ Employment
- ▶ Frisco ISD
- ▶ Block/Low Balance Calls

#### ONLINE SERVICES

- ▶ Online Prepayments
- ▶ Online Forms
- ▶ Apply Online for Free & Reduced Meal Benefits-NEW!
- ▶ Free/Reduced Meal Application-English
- ▶ Free/Reduced Meal Application-Spanish
- ▶ Ask the Dietitian
- ▶ Virtual Cafeteria
- ▶ Nutri-Net Login (Staff Only)

#### CONTACT US

Frisco ISD Child Nutrition Program

Welcome to  
**FRISCO Café**  
By Frisco ISD Child Nutrition

Students in FISSD are served healthy and delicious foods by award winning employees in their Child Nutrition Program.  
[Click here to read more....](#)

### SCHOOL MENUS



- ▶ [Elementary \(K-5\)](#)
- ▶ [Middle \(6-8\)](#)
- ▶ [High \(9-12\)](#)
- ▶ [Early Childhood-Breakfast](#)
- ▶ [Early Childhood-Lunch](#)

### VIRTUAL CAFETERIA

Eating healthy has never been more important than it is today!

Enter the Virtual Cafe' to discover the nutritional information about the foods you enjoy each day in our school Cafés!



▶ ELEMENTARY

▶ MIDDLE SCHOOL

### WHAT'S NEW...

#### WELCOME BACK!

Click below to read the Summer 2010 **PARENTS MESSAGE**

**New This Year** - Apply for Free & Reduced Meal Benefits Online! Click [here](#) for more info or below to apply online!

**Apply Online!**  
Free & Reduced Meal Benefits 24/7

# Staley School Day



## Staley Middle School Bell Schedule 2010-2011



Regular Bell Schedule		
Period	Time	Minutes
First	8:40 - 9:26	46
Second	9:30 - 10:16	46
Third	10:20 - 11:09	49
Fourth	11:13 - 12:00	47
<b>Fifth</b>		
	<b>Group A</b>	
Lunch	12:01 - 12:31	30
Class	12:35 - 1:22	47
	<b>Group B</b>	
Class	12:04 - 12:50	46
Lunch	12:51 - 1:21	30
Sixth	1:26 - 2:13	47
Seventh	2:17 - 3:04	47
Eighth	3:08 - 3:55	47

Mustang TEAMS Wednesday Bell Schedule		
Period	Time	Minutes
First	8:40 - 9:22	42
Second	9:26 - 10:07	42
Third	10:11 - 10:55	44
Fourth	10:59 - 11:43	42
<b>Fifth</b>		
	<b>Group A</b>	
Lunch	11:46 - 12:16	30
Class	12:20 - 1:02	42
	<b>Group B</b>	
Class	11:47 - 12:29	42
Lunch	12:32 - 1:02	30
<b>Mustang TEAMS</b>		
	1:07 - 1:37	30
Sixth	1:41 - 2:23	42
Seventh	2:27 - 3:09	42
Eighth	3:13 - 3:55	42

Activity Bell Schedule		
Period	Time	Minutes
First	8:40 - 9:21	41
Second	9:25 - 10:06	41
Third	10:10 - 10:52	42
Fourth	10:56 - 11:37	41
<b>Fifth</b>		
	<b>Group A</b>	
Lunch	11:38 - 12:08	30
Class	12:12 - 12:59	47
	<b>Group B</b>	
Class	11:41 - 12:27	46
Lunch	12:28 - 12:58	30
Sixth	1:03 - 1:43	40
Seventh	1:47 - 2:27	40
Eighth	2:31 - 3:11	40
Activity	3:15 - 3:55	40

### Lunch Schedule (5<sup>th</sup> period classes)

#### A Lunch

8<sup>th</sup> Grade Core, Math Labs, Reading Labs, Teen Leadership, GT, ESL, Health, Aides, Video/MM, Team 7B (Sh.Carroll, Toombs, Ladd, Perez, Watson)

#### B Lunch

6<sup>th</sup> Grade Core, Band, Art, PE, FA, Computers, Team 7A (Cordova, Linton, Brown, Westerbeke)

# What if I am not at school?

We will miss you!!!!

If your child needs to miss school please call the day of the absence to inform us.

In addition to calling, please either send a note or email the absence excuse within 3 days.

(Hint: Emailing is much easier and more efficient.)

# How will I make it to class on time?

Don't worry. You have four minutes between passing periods. This is plenty of time to go to your locker, get a drink of water, and then sit down in class prepared for the tardy bell to ring.

Hint: If you need to use the restroom and do not think you have enough time go, check in with your next period teacher to ask him/her permission to go. They are usually pretty understanding about this.

# Guidance Counselors

TEAMS

# PAP Classes

Hot off the press & NEW this year...

- MIDDLE SCHOOL COURSEWORK FOR HIGH SCHOOL CREDIT
- Beginning with this year's sixth graders, the graduating class of 2017, if a class is taken in middle school for high school credit, the grade received will count toward the high school grade point average. In the past, a student received the credit but the grade was not computed in the GPA. If you have questions regarding options for these high school credit classes, or about what this change could mean for your student, please contact the counselor at your school.
- What courses are included at Staley Middle School?
- 7<sup>th</sup> grade – Spanish IA
- 8<sup>th</sup> grade – Spanish IB, Health, Algebra