



Frisco Independent School District
High School #9
March 3, 2014



Precedent for two story classroom wings, height of stone water table around the building, and window details.



Traditional Designs: Inigo Jones

The Queen's House - 1616



Precedent for main entry with pediment and three equal semi-circle arched openings. Articulation of columns became a major element throughout the façade along the main drive in front of the building..

Traditional Designs: Gian Lorenzo Bernini

Sta Maria del' Assuunzione Ariccia (1662-3)





Traditional Designs: Higher Education

Texas Christian University - Fort Worth, TX (1873)



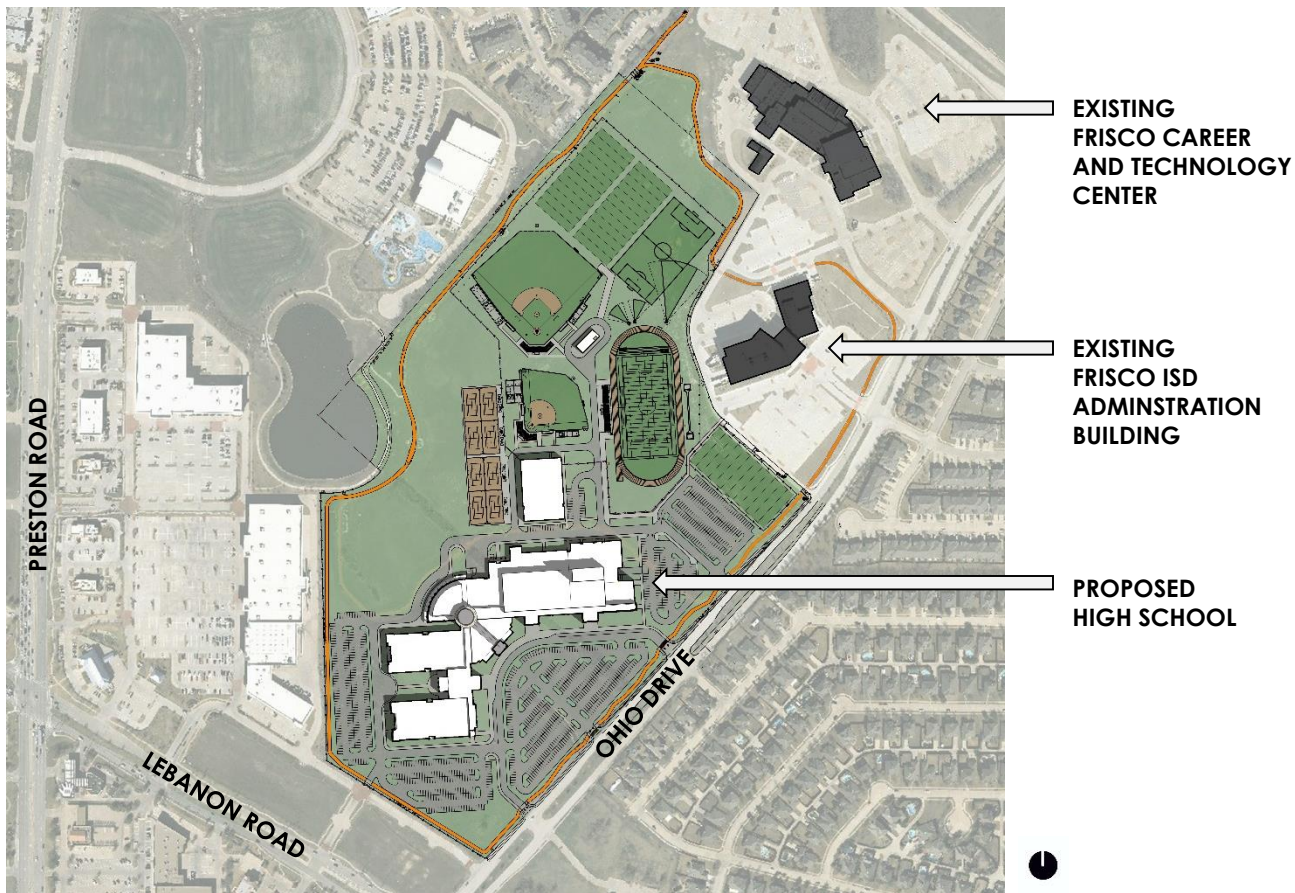


Precedent for brick and cast stone color, dome on rotunda, and articulation of windows, and detail of cornice on two story façade.

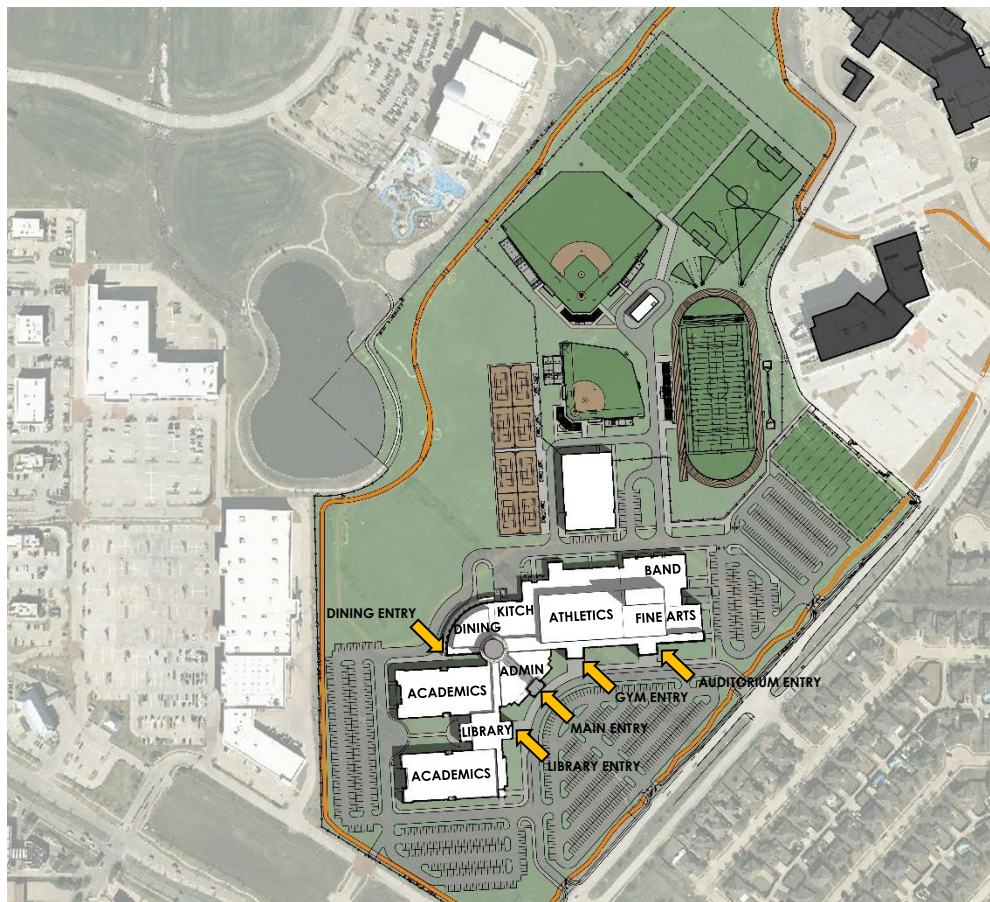
Traditional Designs: Higher Education

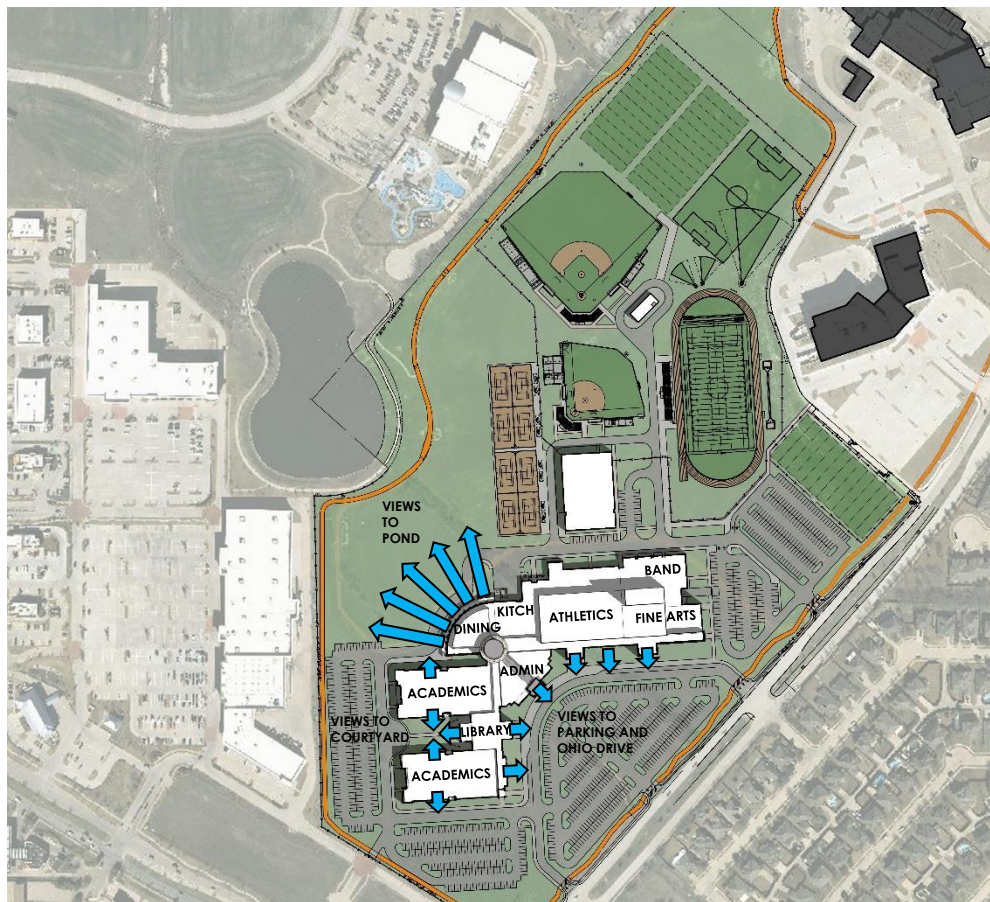
Southwestern Baptist Theological Seminary – Fort Worth, TX (1910-1925)

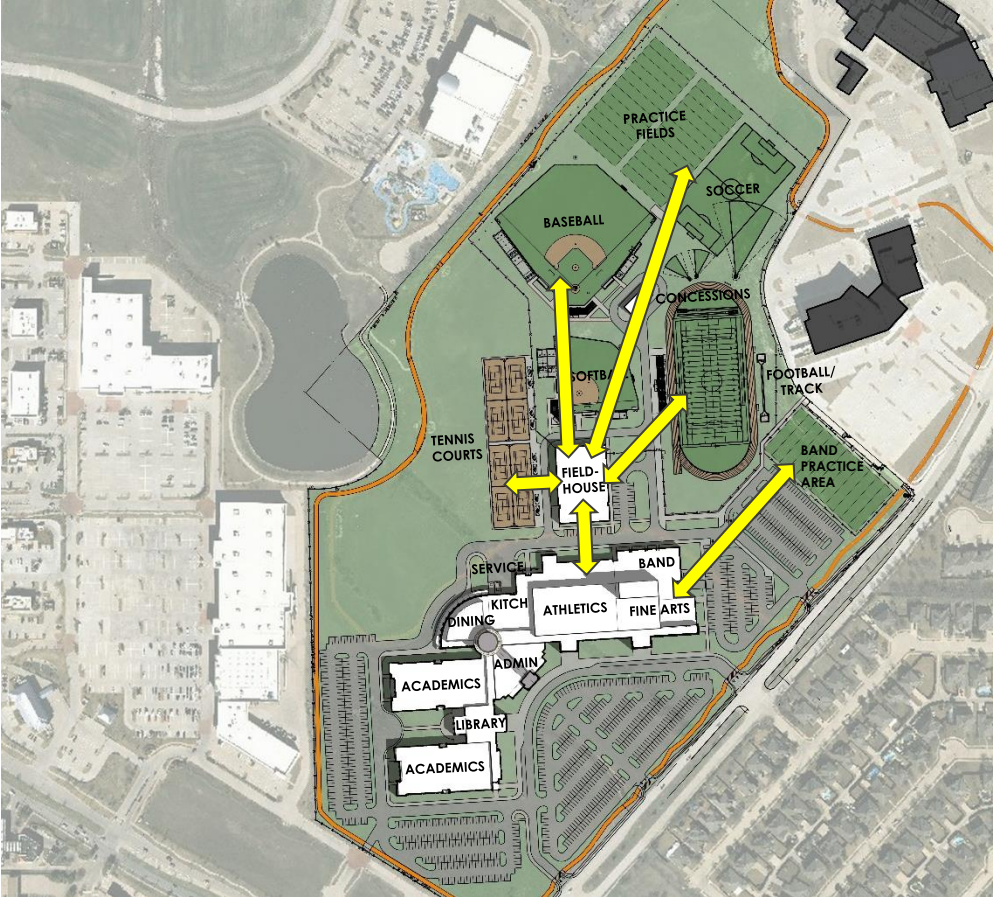






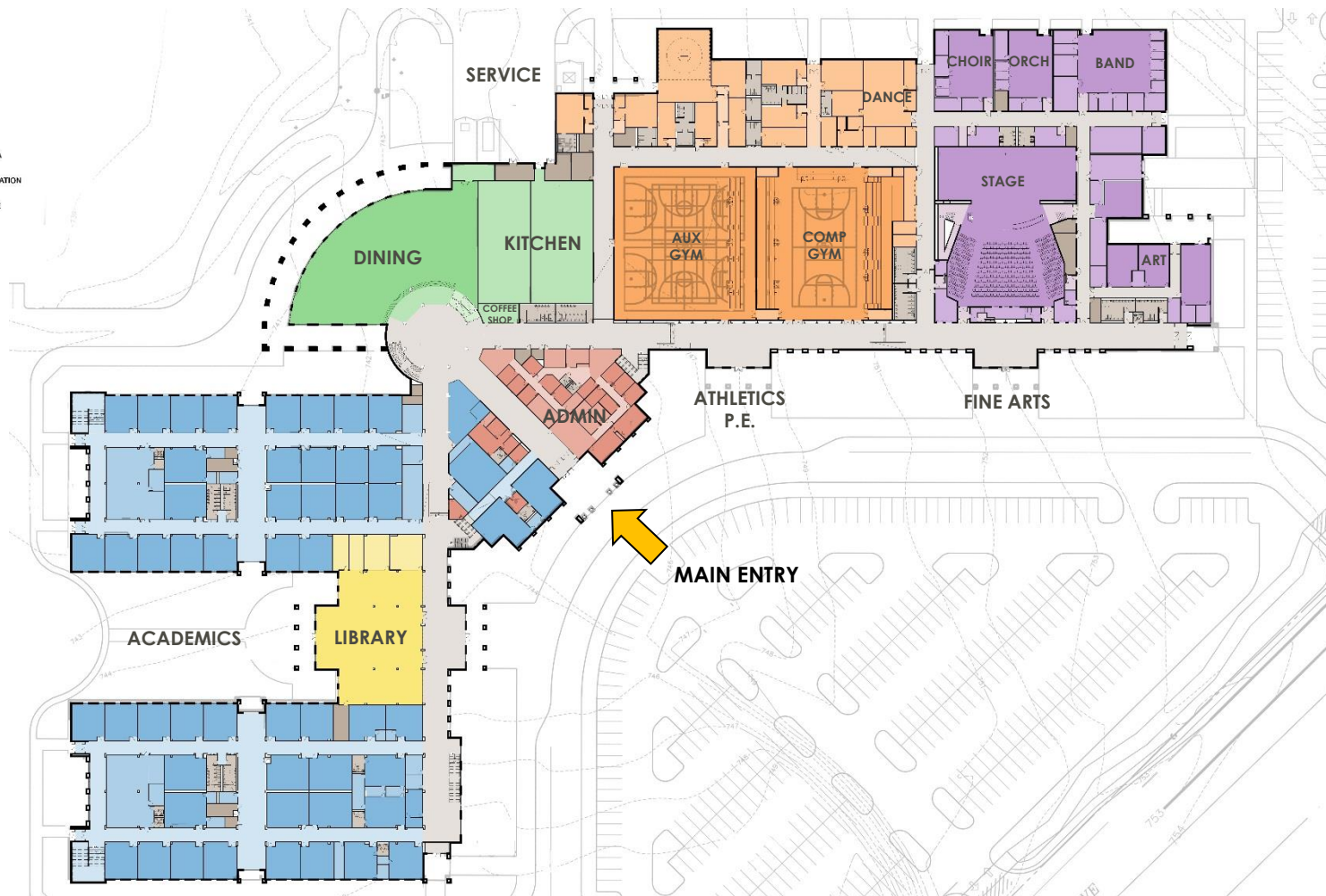






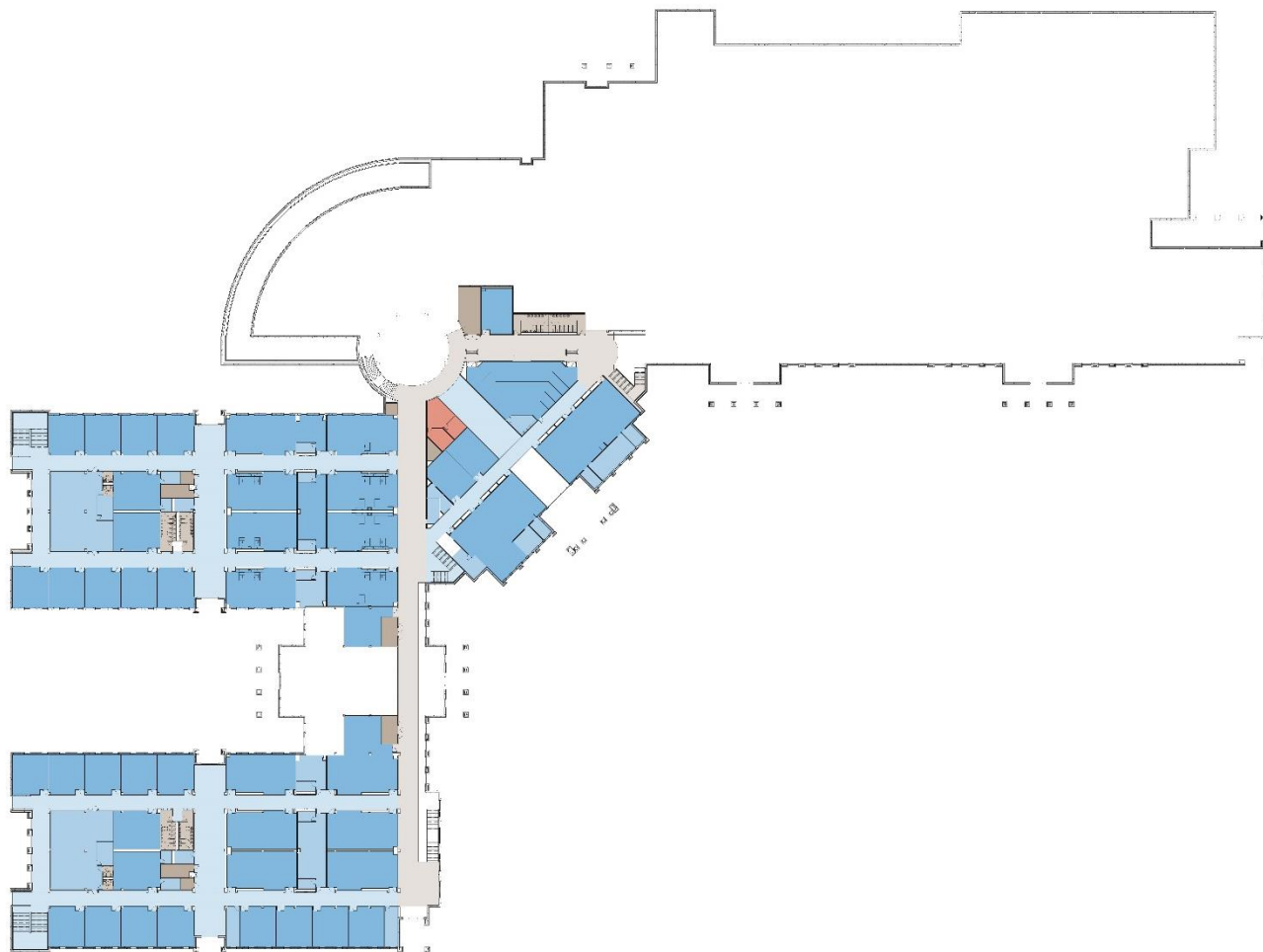
COLOR LEGEND

- FINE ARTS
- ACADEMIC
- FOOD SERVICE
- LIBRARY / MEDIA
- PHYSICAL EDUCATION
- ADMINISTRATIVE
- CIRCULATION
- SERVICE
- SUPPORT



COLOR LEGEND

- FINE ARTS
- ACADEMIC
- FOOD SERVICE
- LIBRARY / MEDIA
- PHYSICAL EDUCATION
- ADMINISTRATIVE
- CIRCULATION
- SERVICE SUPPORT



Second Floor Plan



Exterior Perspective

Main Entry from Ohio Drive



Exterior Perspective

View of School from Ohio Drive



Exterior Perspective

View of Main Entry from Parent drive



Exterior Perspective

View of Library Courtyard and Classroom Wings



Exterior Perspective





Exterior Perspective

View of School from South