

Student Travel Guidelines

2014-15

Tier* 1 Travel

District Funds Fully

- UIL Contests
 - Academic
 - Athletic
 - Music
 - One Act Play
- Texas Music Educators Association (TMEA)
- Visual Arts Scholastic Event (VASE)
- ¹Texas Forensic League (TFL)
- Academic Decathlon
- Elementary Eisemann trip
- Elementary Honor Choir local trips
- Elementary Opera trip
- Dance Educator Assessment of Learning (DEAL) local contest
- @ Math and Science contests
- @ Science Fairs
- @ CTE Group competitions:
 - Future Farmers of America (FFA)
 - Distributive Education Clubs of America (DECA)
 - Health Occupations Students of America (HOSA)
 - Family, Career and Community Leaders of America (FCCLA)
 - Business Professionals of America (BPA)
- @ Local Band, Guard, Drill, Dance contests
- Texas Association of Future Educators (TAFE)
 - Culinary Arts
 - Broadcast-Audio/Video
 - Mock Trial
 - Computer Science

¹ Funding limited to in state competition

@ Caps on funding and number of students may apply

* May not be a comprehensive list, other trips may arise in future

Travel requests for any trip (Tier 1, 2 or 3) other than UIL/AcDec/TMEA/VASE must be submitted at the start of the year.
No international student travel will be approved by FISD.

Tier* 2 Travel

District Provides Partial Financing

- Destination Imagination
 - Registration fees and numbers, coordinator stipends, capped amount for travel/meals/lodging
- 5th Grade Camp
 - 1 Teacher stipend, nurse sub, campus may pay for transportation; but no 199 funds
- Dance Camp
 - Director's expenses and transportation costs
- Cheer Camp
 - Director's expenses and transportation costs
- State Solo and Ensemble
 - Registration fees
- Student Council Camp
 - Director's expenses and transportation costs
- Jazz Competition
 - Director's expenses and transportation costs

* May not be a comprehensive list, other trips may arise in future
Travel requests for any trip (Tier 1, 2 or 3) other than UIL/AcDec/TMEA/VASE must be submitted at the start of the year.
No international student travel will be approved by FISD.

Tier* 3 Travel

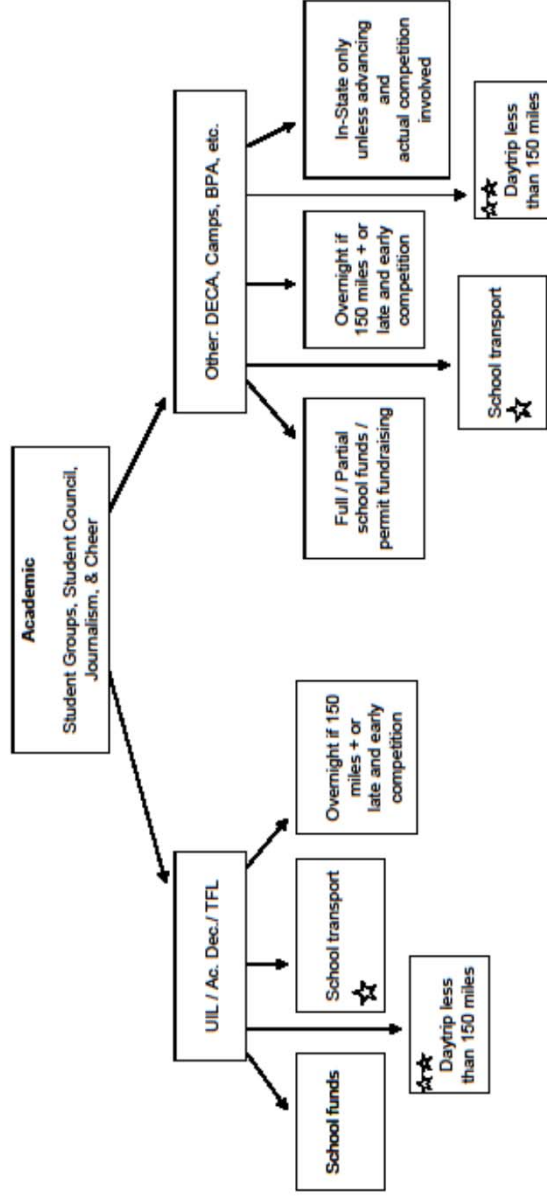
District Provides No Financial Support

- Reward Trips
 - Band (Spring or BOA State)
 - Orchestra
 - Choir
 - Drill Team
 - Winter Guard (non NTCA)

- Senior Six Flags

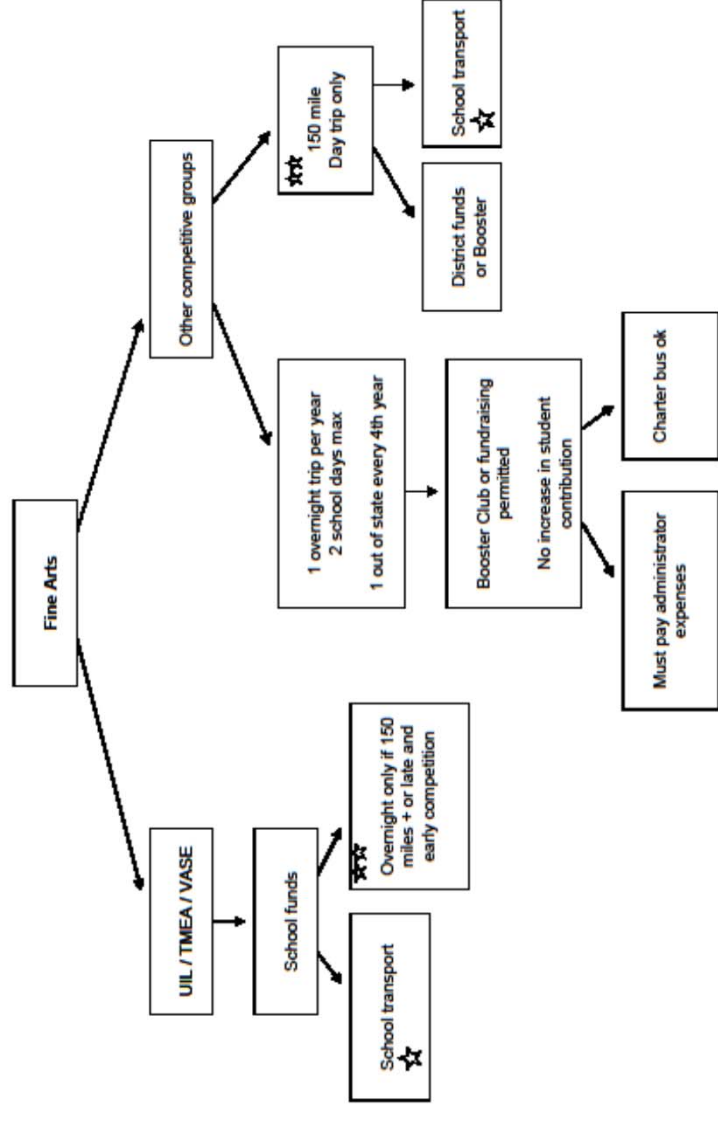
* May not be a comprehensive list, other trips may arise in future
No international student travel will be approved by FISD.

Student Travel Guidelines 2014-15



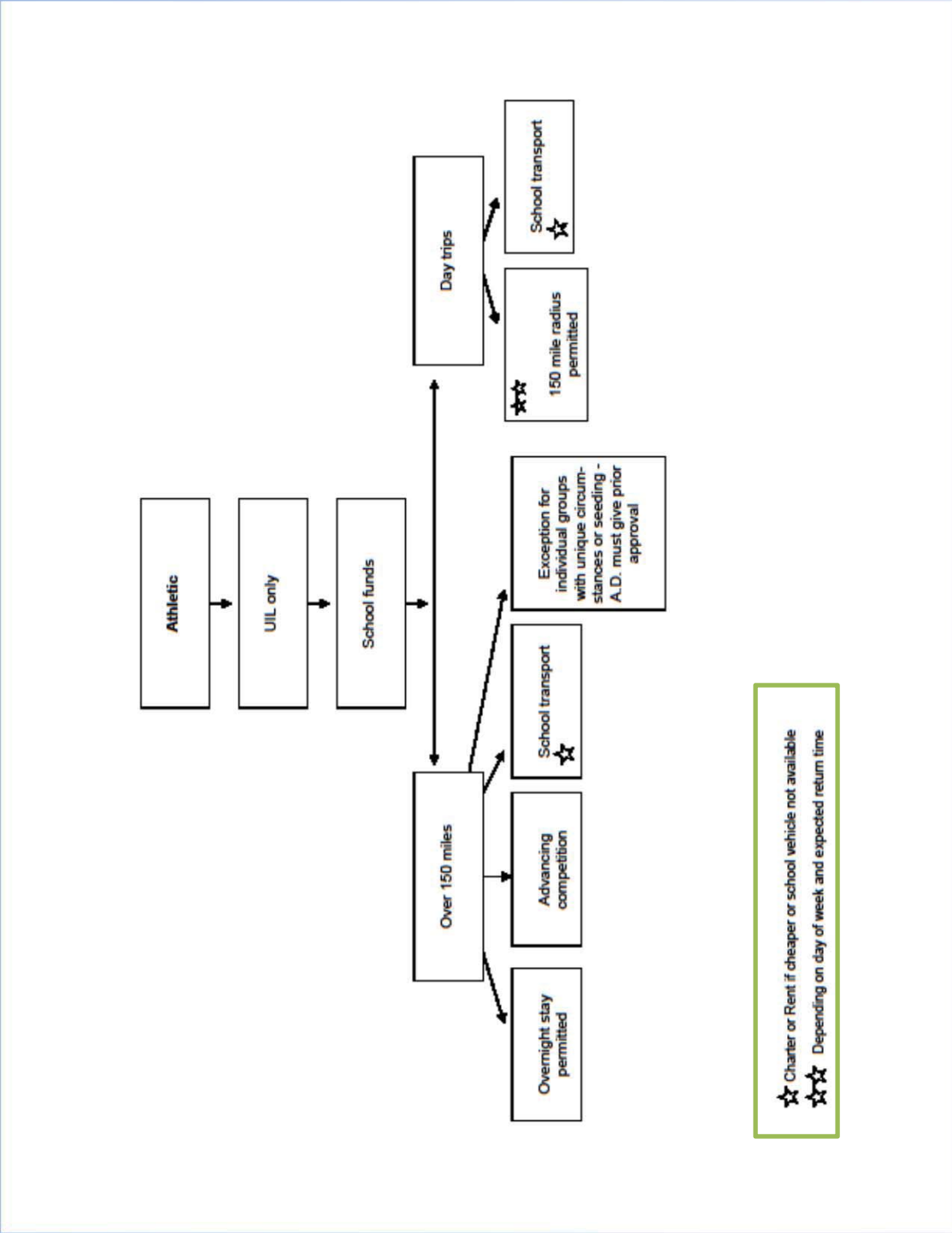
☆☆ Charter or Rent if cheaper or school vehicle not available
 ☆☆☆ Depending on day of week and expected return time

Student Travel Guidelines 2014-15



☆☆ Charter or Rent if cheaper or school vehicle not available
 ☆☆☆ Depending on day of week and expected return time

Student Travel Guidelines 2014-15



☆☆ Charter or Rent if cheaper or school vehicle not available
 ☆☆☆ Depending on day of week and expected return time

Student Travel Guidelines 2014-15

