

Student Travel Guidelines

2014-15

A FISD Student Travel Guidelines Committee began meeting in October of 2013. The goal of the committee was to develop comprehensive and specific guidelines to be used in evaluation and authorization of all FISD Student Travel, with the exclusion of study/field trips.

Committee members:

Chair – Rick Burnett, Executive Director for Student Services

Kenny Chandler, Secondary Area Director for Curriculum and Instruction

Laurie Tinsley, Elementary Area Director for Curriculum and Instruction

Jim McDaniel, Director of Fine Arts

Richard Oldham, Assistant Director of Fine Arts

David Kuykendall, Director of Athletics

Doug Becker, Director of Transportation

Todd Fouche, Director of Finance

Bethany Rowan, Principal Pink Elementary School

Phil Evans, Principal Cobb Middle School

Alan Waligura, Principal Independence High School

Dianna Manual, Principal Frisco CTE Center

There were several factors that guided the committee as they worked to establish the new guidelines.

Factors:

- Protecting the integrity of the school day and limiting the loss of academic time
- The safety of student and staff
- Providing quality opportunities for our students
- The financial implications for the district
- Insuring equity for all students, no more the school or program in which they were enrolled

Tier* 1 Travel

District Funds Fully

- UIL Contests
 - Academic
 - Athletic
 - Music
 - One Act Play
- Texas Music Educators Association (TMEA)
- Visual Arts Scholastic Event (VASE)
- ¹Texas Forensic Association (TFA)
- Academic Decathlon
- Elementary Eisemann trip
- Elementary Honor Choir local trips
- Elementary Opera trip
- Dance Educator Assessment of Learning (DEAL) local contest
- @ Math and Science contests
- @ Science Fairs
- @ CTE Group competitions:
 - Future Farmers of America (FFA)
 - Distributive Education Clubs of America (DECA)
 - Health Occupations Students of America (HOSA)
 - Family, Career and Community Leaders of America (FCCLA)
 - Business Professionals of America (BPA)
 - Texas Association of Future Educators (TAFE)
 - Culinary Arts
 - Broadcast-Audio/Video
 - Mock Trial
 - Computer Science
- @ Local Band, Guard, Drill, Dance contests

¹ Funding limited to in state competition

@ Caps on funding and number of students may apply

* May not be a comprehensive list, other trips may arise in future

Travel requests for any trip (Tier 1, 2 or 3) other than UIL/AcDec/TMEA/VASE must be submitted at the start of the year.

No international student travel will be approved by FISD.

Tier* 2 Travel

District Provides Partial Financing

- Destination Imagination
 - Registration fees and numbers, coordinator stipends, capped amount for travel/meals/lodging
- 5th Grade Camp
 - 1 Teacher stipend, nurse sub, campus may pay for transportation; but no 199 funds
- Dance Camp
 - Director's expenses and transportation costs
- Cheer Camp
 - Director's expenses and transportation costs
- State Solo and Ensemble
 - Registration fees
- Student Council Camp
 - Director's expenses and transportation costs
- Jazz Competition
 - Director's expenses and transportation costs

* May not be a comprehensive list, other trips may arise in future

Travel requests for any trip (Tier 1, 2 or 3) other than UIL/AcDec/TMEA/VASE must be submitted at the start of the year.

No international student travel will be approved by FISD.

Tier* 3 Travel

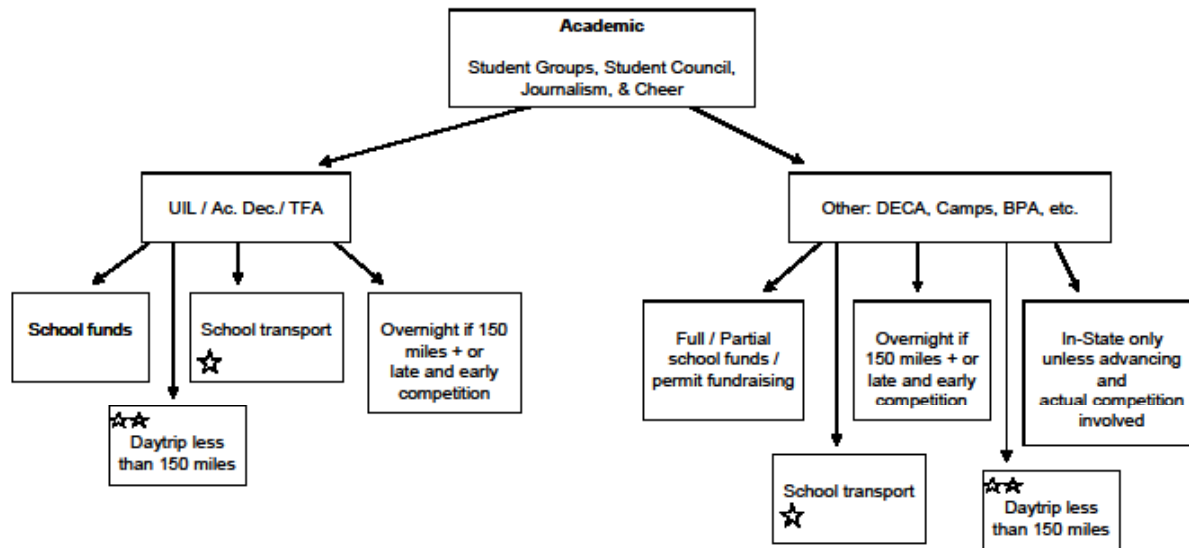
District Provides No Financial Support

- Reward Trips
 - Band (Spring or BOA State)
 - Orchestra
 - Choir
 - Drill Team
 - Winter Guard (non NTCA)

- Senior Six Flags

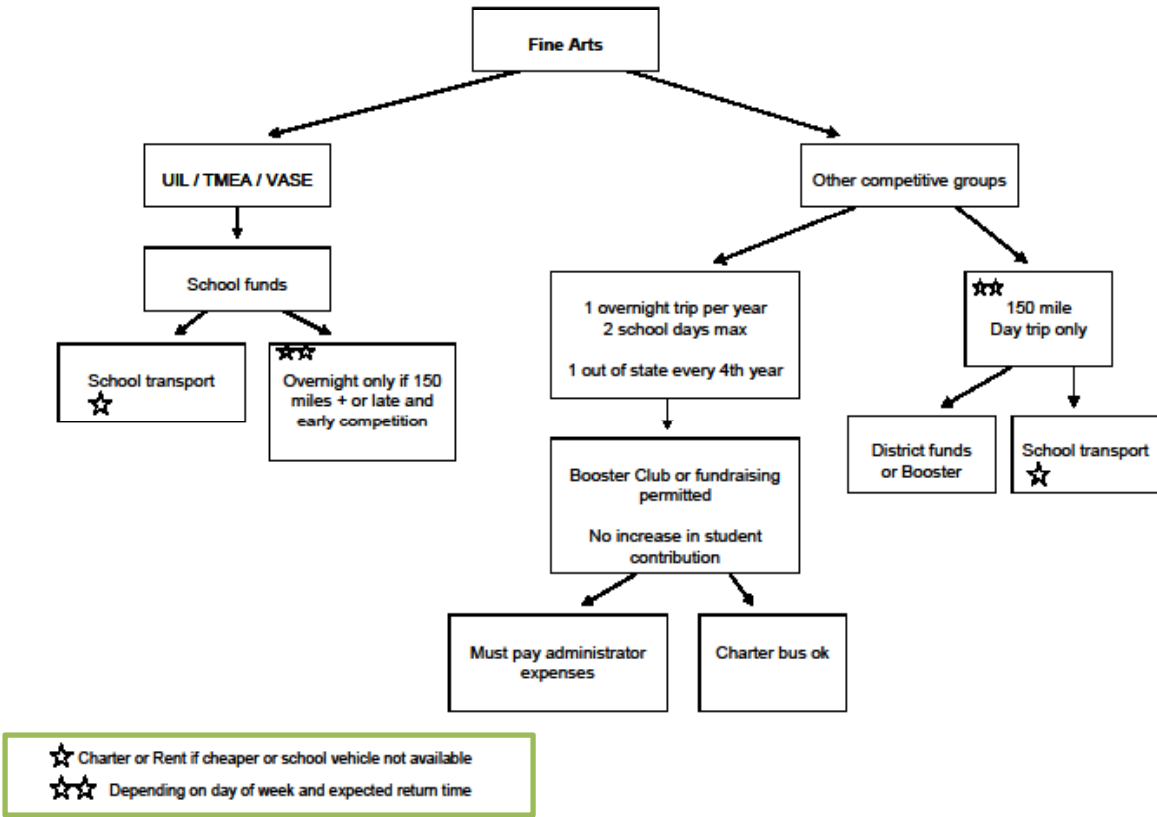
* May not be a comprehensive list, other trips may arise in future
No international student travel will be approved by FISD.

Student Travel Guidelines 2014-15

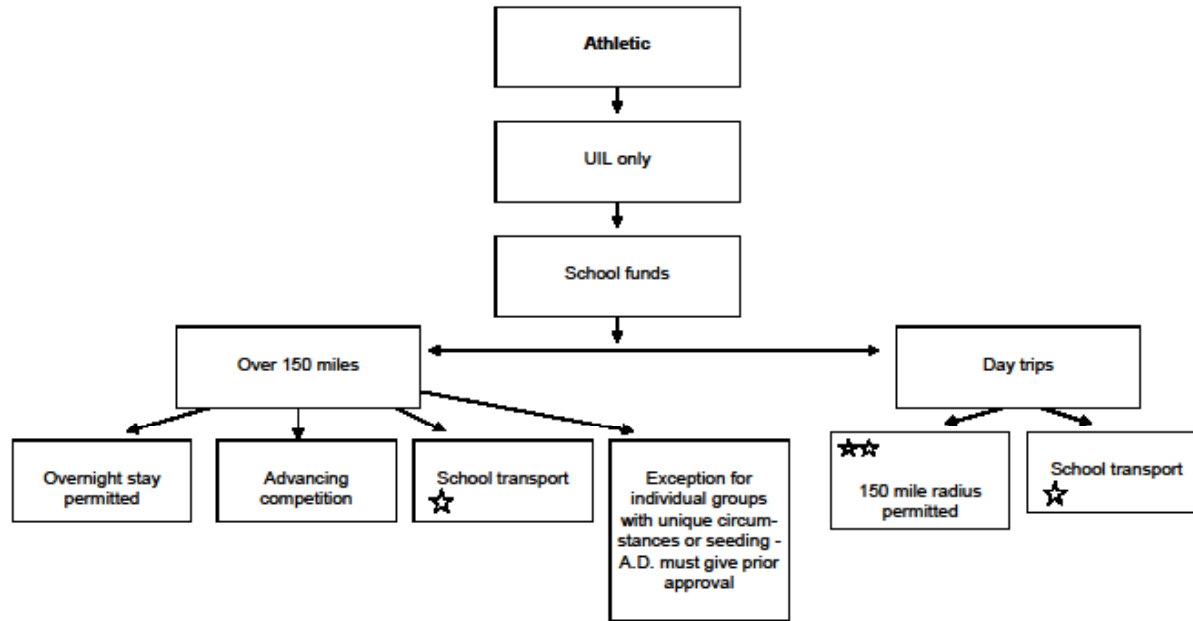


★ Charter or Rent if cheaper or school vehicle not available
★★ Depending on day of week and expected return time

Student Travel Guidelines 2014-15

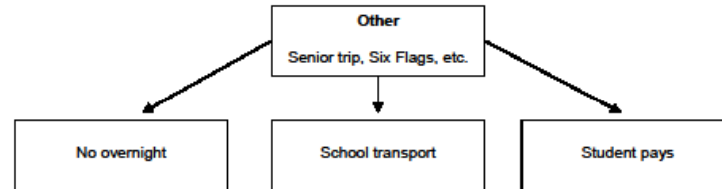


Student Travel Guidelines 2014-15



- ☆ Charter or Rent if cheaper or school vehicle not available
- ☆☆ Depending on day of week and expected return time

Student Travel Guidelines 2014-15



Implementation Steps

- Communicate Guidelines to Campus Staff
- Train Principals and Assistant Principals
- Principals or Designee Train Directors and Coaches