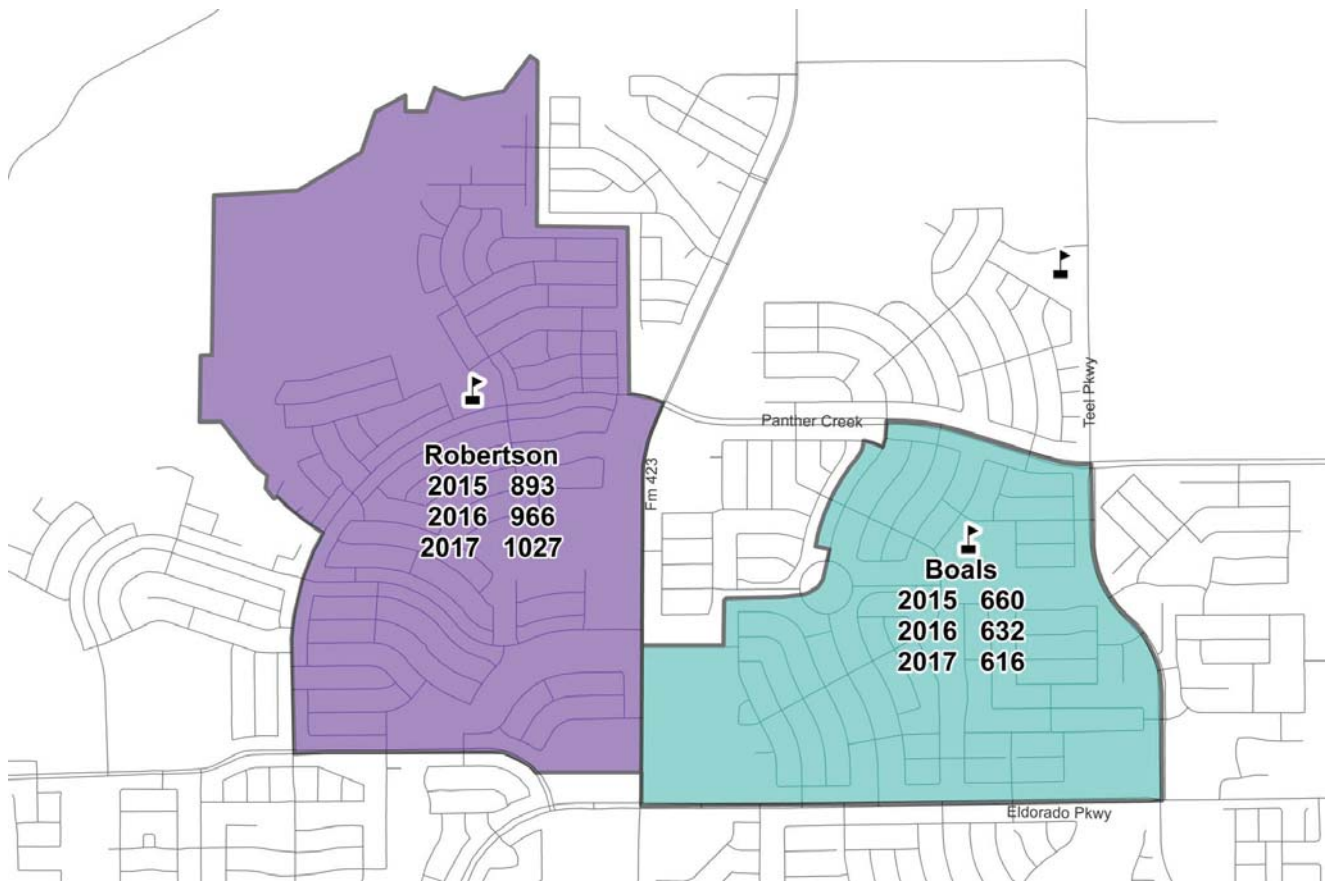


# Frisco ISD Rezoning Considerations

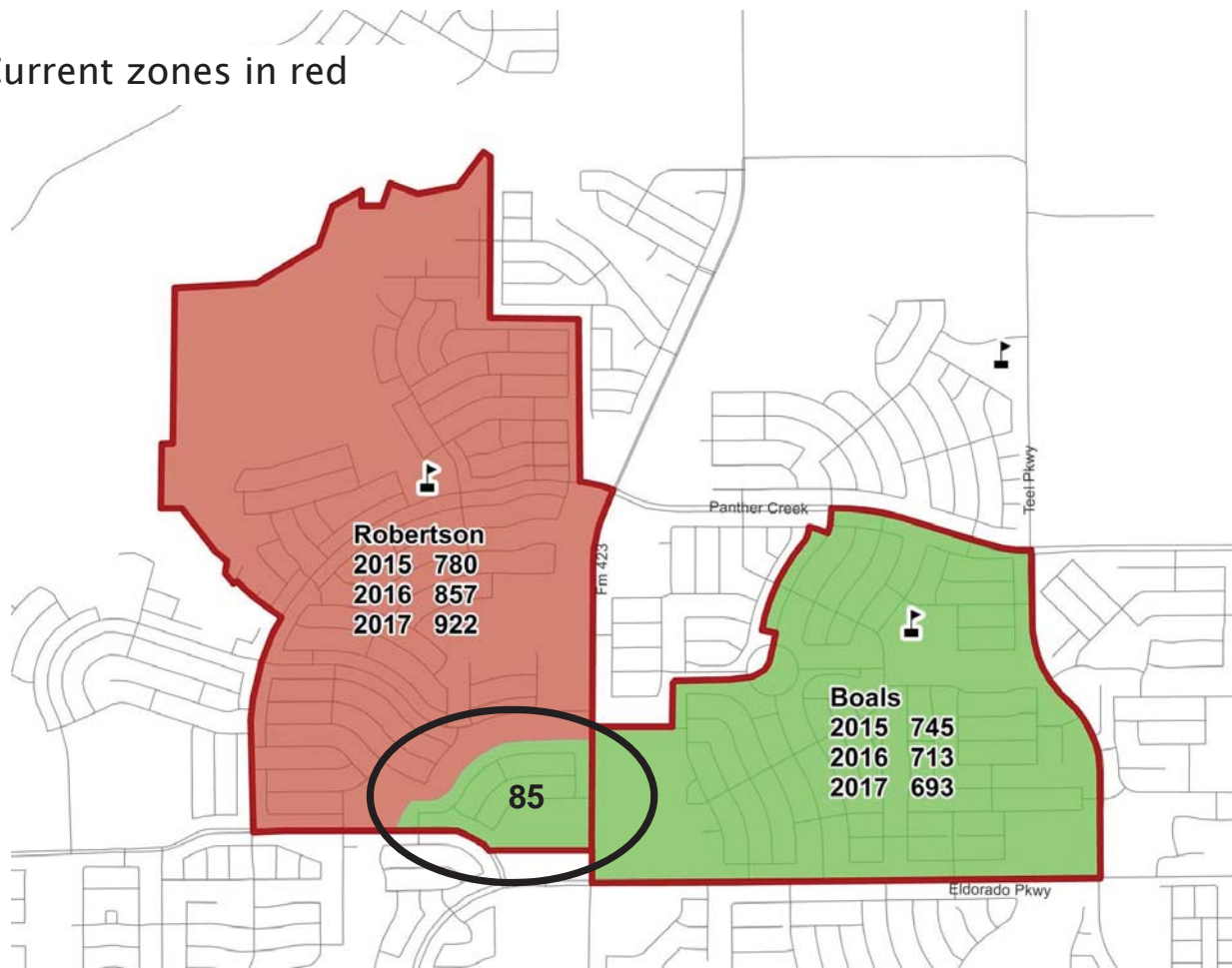
- ▶ Effective utilization of space – efficient space utilization for effective instructional programs
- ▶ Student stability – minimize the number of students changing school
- ▶ Proximity to the school
- ▶ Diversity of the student body – heterogeneous campus enrollments, when practical
- ▶ Unity in the community

# Robertson-Boals Projections – No Adjustment

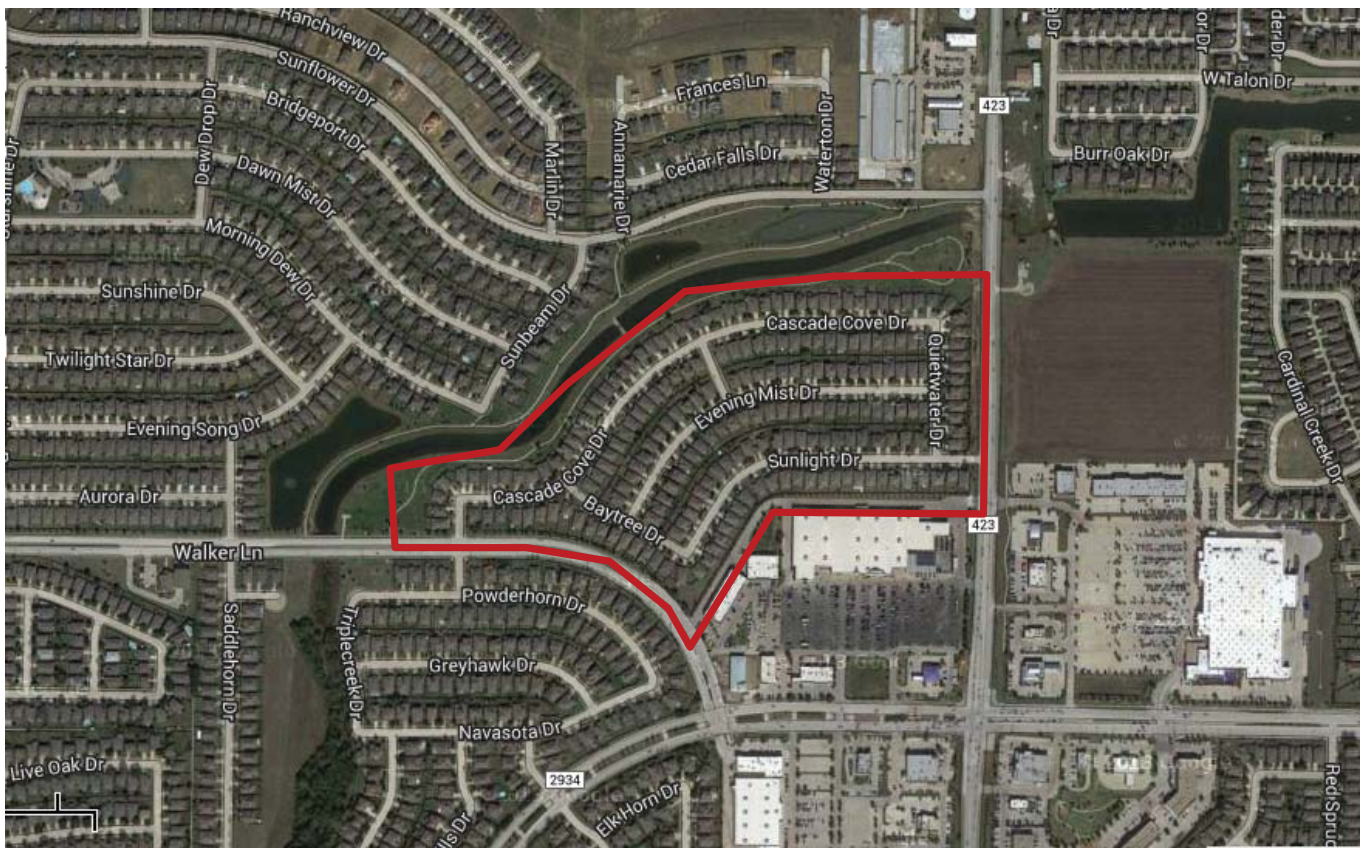


# Robertson Elementary Zone Adjustment

Current zones in red

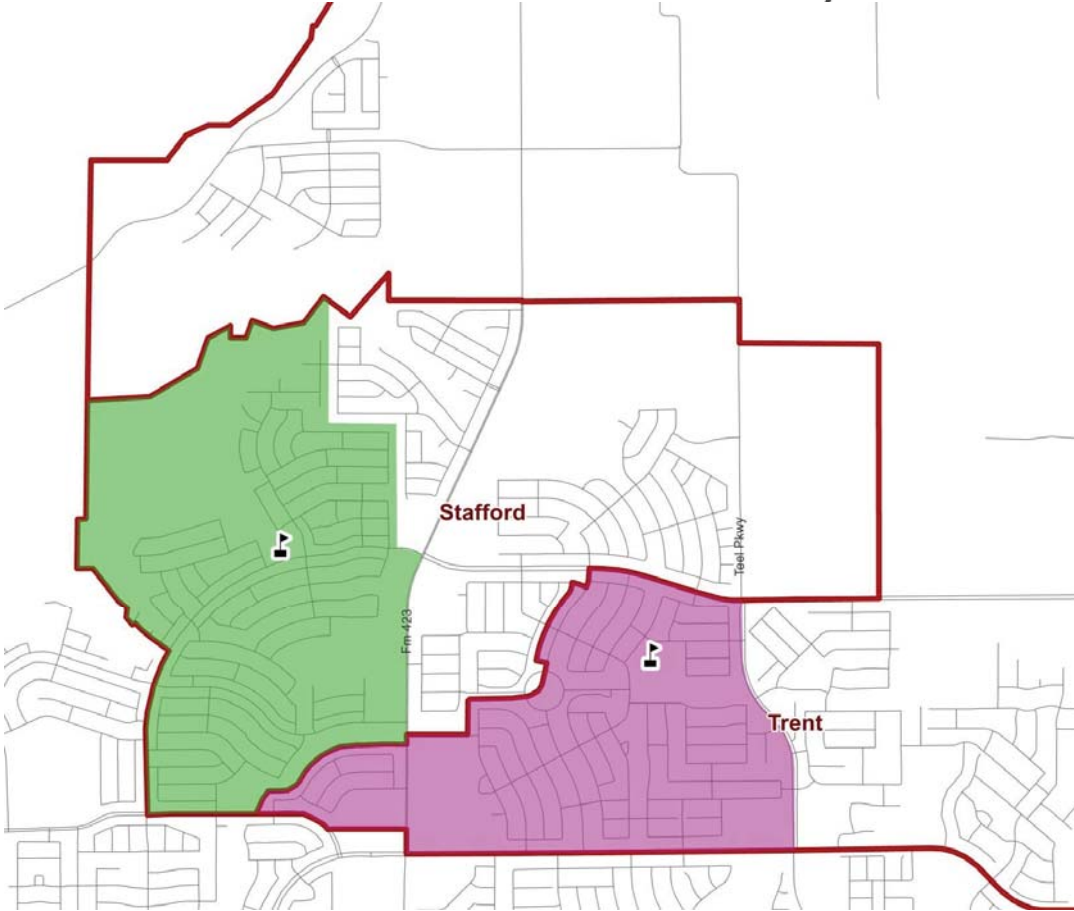


# Sunset Pointe at northwest corner of FM 423 and Eldorado Pkwy



# Robertson Elementary Zone Adjustment

## Middle School Zone Overlay



# Robertson Elementary Zone Adjustment High School Zone Overlay

